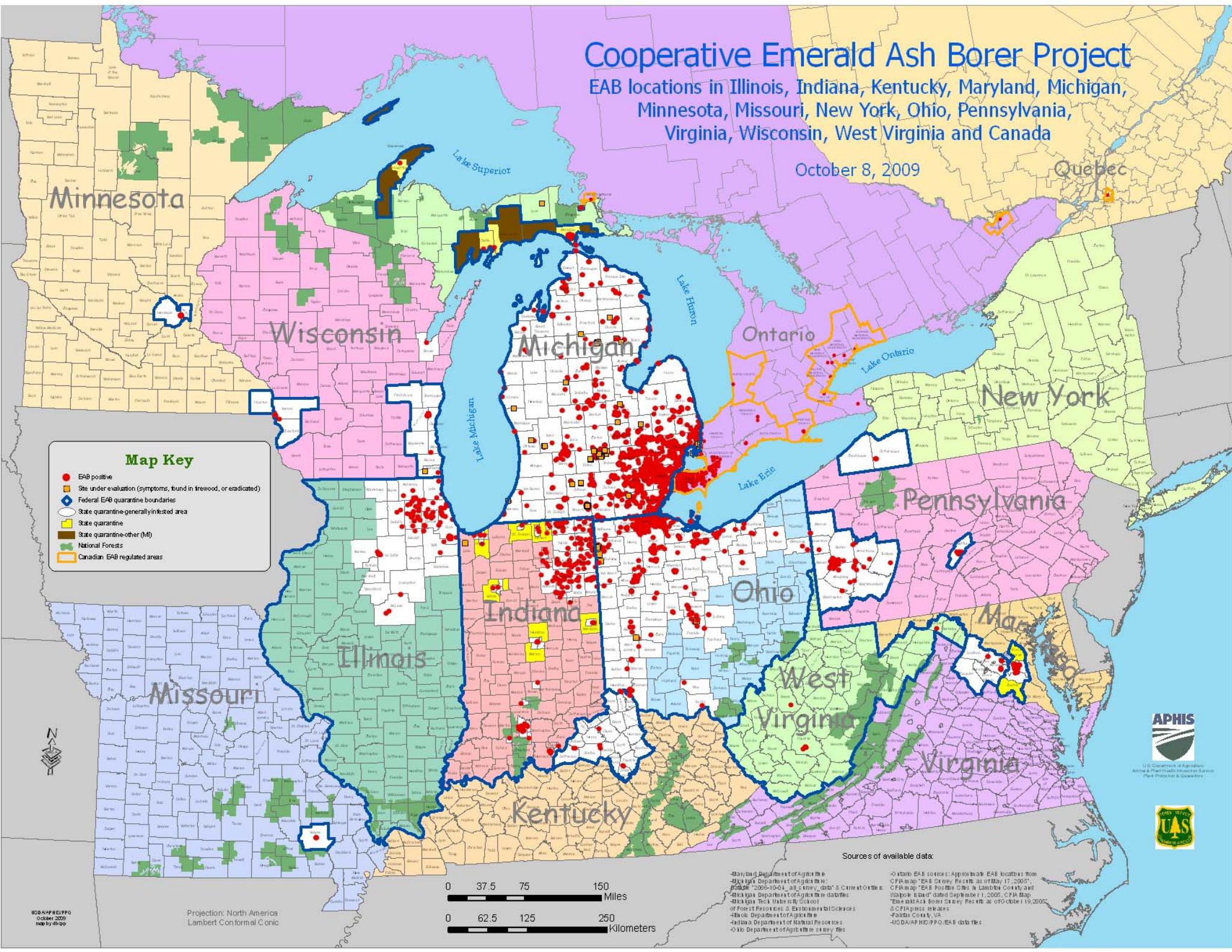


# Cooperative Emerald Ash Borer Project

EAB locations in Illinois, Indiana, Kentucky, Maryland, Michigan, Minnesota, Missouri, New York, Ohio, Pennsylvania, Virginia, Wisconsin, West Virginia and Canada

October 8, 2009

Quebec



### Map Key

- EAB positive
- Site under evaluation (symptoms, found in firewood, or eradicated)
- ◊ Federal EAB quarantine boundaries
- ◊ State quarantine-generally infested area
- ◊ State quarantine
- State quarantine-other (MI)
- National Forests
- Canadian EAB regulated areas



USDA/APHIS/PPD  
October 2009  
map by dbrpp

Projection: North America  
Lambert Conformal Conic



### Sources of available data:

- Maryland Department of Agriculture
- Michigan Department of Agriculture
- Missouri Department of Agriculture
- Minnesota Department of Agriculture
- New York State Department of Agriculture and Markets
- Ohio Department of Agriculture
- Pennsylvania Department of Agriculture
- Virginia Department of Agriculture and Forestry
- West Virginia Department of Agriculture
- Wisconsin Department of Agriculture, Trade and Consumer Services
- Canadian EAB regulated areas
- Ontario EAB sources: Approximate EAB locations from CFA map "EAB Survey Results as of May 17, 2005"
- CFA map "EAB Positive Sites in Columbia County and Warren County" dated September 1, 2005, CFA Map "Emerald Ash Borer Survey Results as of October 19, 2005"
- CFA press releases
- Fairfax County, VA
- USDA/APHIS/PPD/EAB data files

